

Background

This portfolio was created for my Photography Hons. degree with the [Open College of the Arts \(OCA\)](#).

Windsor Great Park covers an area of around 5,000 acres and for many years was the private hunting ground of the kings and queens of England. Nowadays much of it is open for visitors, both tourists and locals. As I came to explore the area I realised that much of the area that was open to the public was rarely visited with tourists keeping to specific, well-publicised, areas. This portfolio looks at the boundaries of these frequently visited areas, looking through these virtual boundaries to the areas beyond.

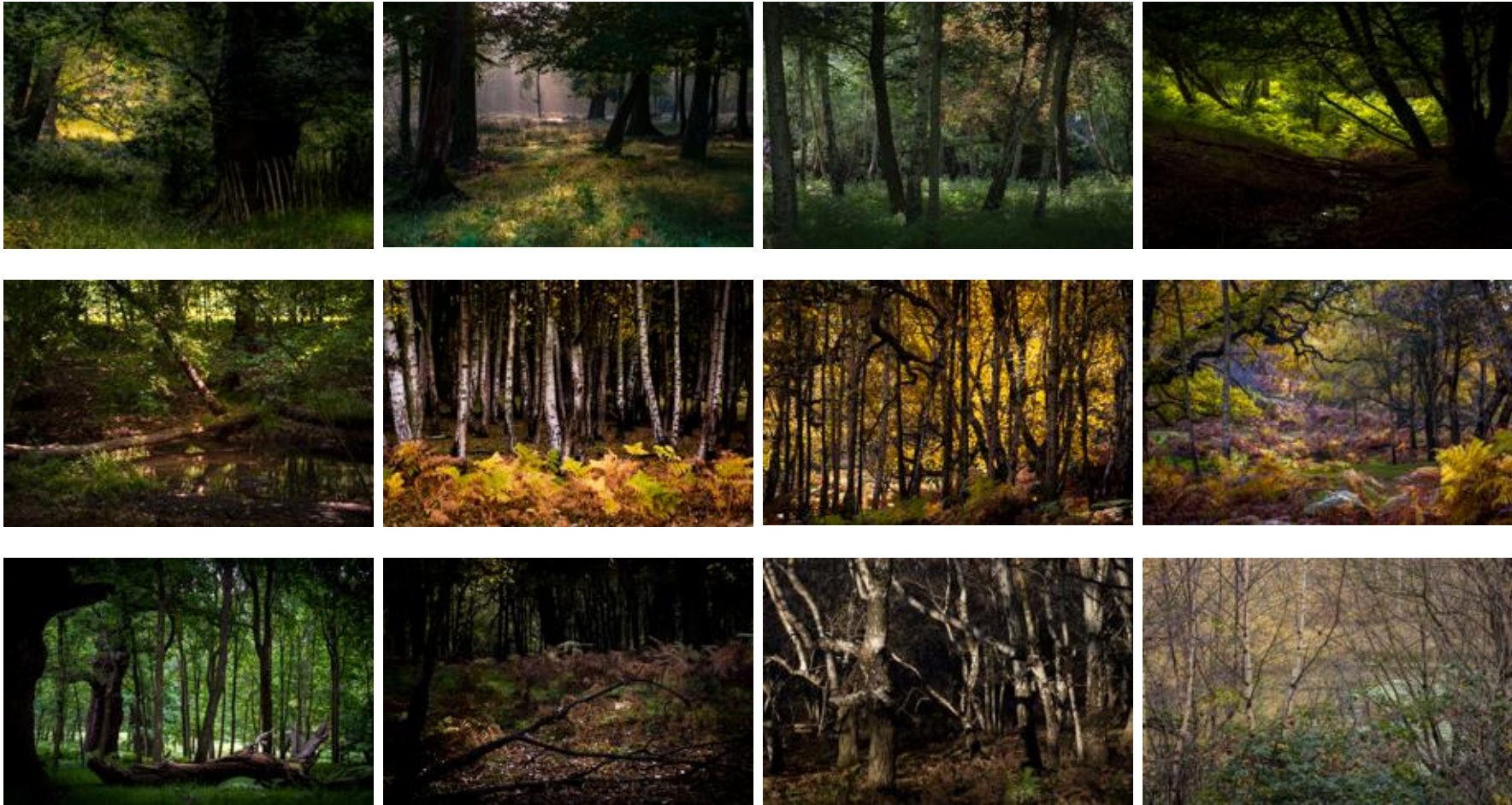
The images on the following pages link back to my website where larger images can be viewed.

Artist's Statement

The majority of visitors to Windsor Great Park follow the same routes as their predecessors, constrained by their own preconceptions of the area, afraid to leave the beaten path and create their own experience. These preconceptions have been created by images and text in magazines and social media, an imagined geography that develops the Tourism Space that is Windsor Great Park and is then itself modified by that Tourism Space.

In my exploration of the Park I've come to love those other areas, the ones that lie outside of this predefined space requiring the visitor to step off the beaten path and explore.

Each of these images shows a glimpse of that "other side", accessible to those who would leave the beaten path and discover their own world, treating the rabbit hole as a portal rather than as a barrier.



Large versions of the images can be viewed online by clicking the above thumbnail. Alternatively, the portfolio, with more background information, can be seen at <http://www.gaslight.me.uk/fullscreen/virtual-boundaries/>